

BC Type

410-435W

TN-MGBS108

First Year Power Degradation **<1.5%**

Year 2-25 Power Degradation **0.40%**

Max Module Efficiency **22.3%**

Power Tolerance **0~3%**

▼ Characteristic

- Suitable for Distribution Market
- Simple design embodies modern style
- Better energy generation performance
- Best Solution to Harsh Conditions Power
- High Reliability Based On Strict Quantity Control
- High-quality module guarantees long-term reliability



Complete System and Product Certifications IEC 61215, IEC 61730, UL 61730, ISO 9001, ISO 14001, ISO 45001, IEC 62941

 Scan and focus on us

 www.toensolar.com

 sales@toenergysolar.com



● Technical Parameter

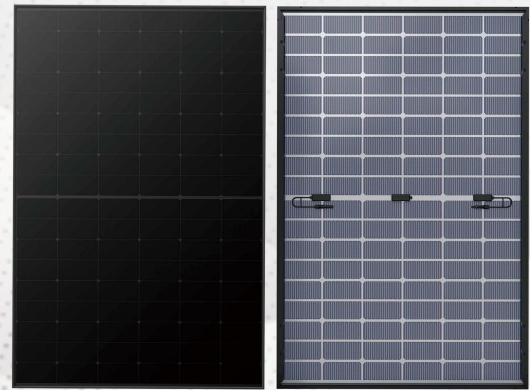
Electrical Characteristics(STC)

Module Type	TN-MGBS108-410W	TN-MGBS108-415W	TN-MGBS108-420W	TN-MGBS108-425W	TN-MGBS108-430W	TN-MGBS108-435W
Maximum Power (Pmax/W)	410	415	420	425	430	435
Open Circuit Voltage (Voc/V)	38.60	38.80	39.00	39.20	39.40	39.60
Short Circuit Current (Isc/A)	13.62	13.70	13.78	13.85	13.93	14.01
Voltage at Maximum Power (Vmp/V)	32.20	32.40	32.60	32.80	33.10	33.20
Current at Maximum Power (Imp/A)	12.74	12.81	12.89	12.96	13.00	13.11
Module Efficiency(%)	21.0	21.3	21.5	21.8	22.0	22.3

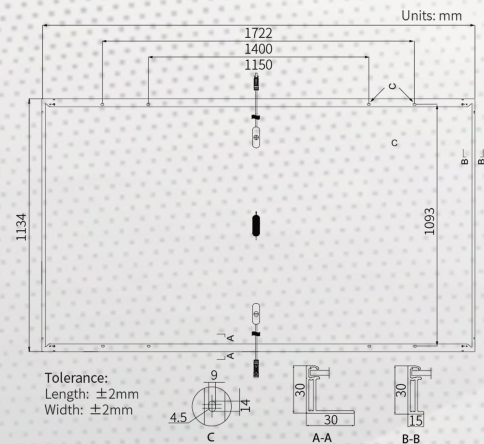
STC : AM1.5 1000W/m² 25°C Test uncertainty for Pmax: ± 3%

Mechanical Parameters

Cell Orientation	108(6X18)
Junction box	IP68
Output Cable	4mm ² , ±1200mm length can be customized
Glass	Double glass, 2.0mm+1.6mm semi-tempered
Frame	Anodized aluminum alloy frame
Weight	22.5kg
Dimension	1722×1134×30mm
Packaging	36pcs per pallet 216pcs per 20' GP 936pcs per 40' HC



Dimensions(Units:mm)



Operating Parameters

Operational Temperature	-40°C ~ +85°C
Power Output Tolerance	0 ~ 3%
Voc and Isc Tolerance	±3%
Maximum System Voltage	DC1500V (IEC/UL)
Maximum Series Fuse Rating	30A
Nominal Operating Cell Temperature	45±2°C
Protection Class	Class II
Fire Rating	IEC Class C

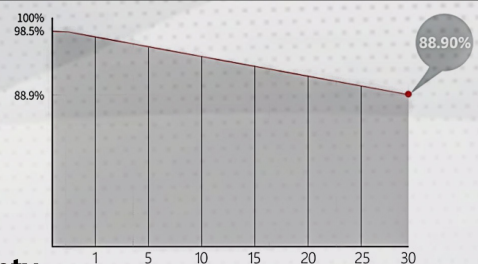
Mechanical Loading

Front Side Maximum Static Loading	5400Pa
Rear Side Maximum Static Loading	2400Pa
Hailstone Test	25mm Hailstone at the speed of 23m/s

Temperature Ratings (STC)

Temperature Coefficient of Isc	+0.050%/°C
Temperature Coefficient of Voc	-0.230%/°C
Temperature Coefficient of Pmax	-0.290%/°C

Additional Value



Warranty

- 12 Years Warranty for Materials And Processing
- 30 Years Warranty for Extra Linear Power Output